



The AAI capacitance fuel probes are designed with our E-Z Cal circuit. The advantage of the circuit is you can calibrate the system in two easy steps. (1) Install the probe in an empty tank, press the “press to cal” switch, and set the adjustment for empty. (2) Fill the tank with fuel and press the “press to cal” switch and set the fuel scale and adjustment. The calibration is complete. There is no need to fill the tank over and over again.

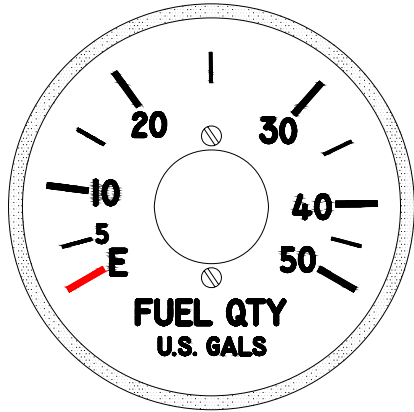
These probes are designed to meet or exceed DO-160 environmental requirements. They are light and very reliable. Using our microprocessor instruments, you can customize your dial to meet your needs. Don't be limited by your tank geometry, the transmitters or the non linearity of the instrument and transmitter.

You have problems... We have solutions.

Visit our website: www.ahlersaerospace.com for more information on our products and services.

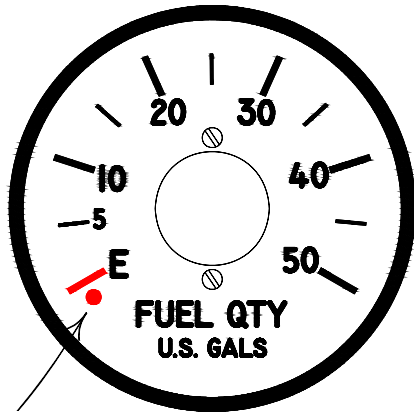
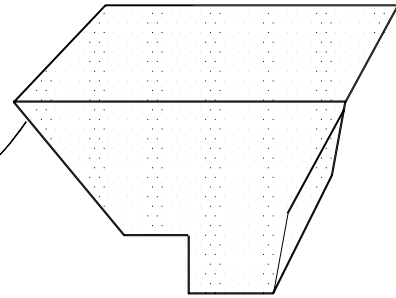
AHLERS AEROSPACE, INC. 3621 Raider Drive, Hurst, TX 76053

Tel: (817) 553-2155 Fax: (817) 553-2161 info@ahlersaerospace.com



BRAND X
NONUNIFORMITY

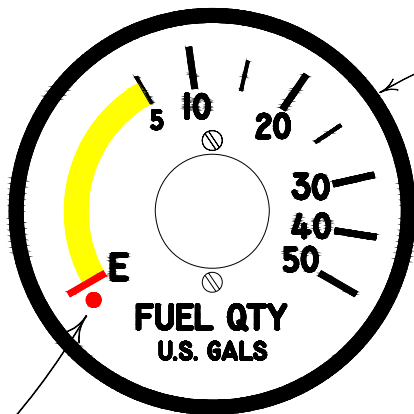
DOES YOUR FUEL TANK GEOMETRY
AND PRESENT TRANSDMITTER CAUSE
YOUR FUEL GAUGE TO LOOK LIKE
THIS?



OPTIONAL LOW
FUEL WARNING LED

AAI VERSION 1
LINEAR

WITH AAI'S "EZ-CAL" CAPACITANCE
FUEL PROBES MATCHED UP TO OUR
MICRO PROCESSOR FUEL QUANTITY
INDICATORS, YOU CAN HAVE A VERY
ACCURATE, CUSTOMIZED FUEL
SYSTEM THAT IS EASY TO CALIBRATE,
AND EASY TO READ.



OPTIONAL LOW
FUEL WARNING LE

AAI VERION 2
EXPANDED SCALE FOR
BETTER READABILITY
AT LOW FUELS

OTHER OPTIONS ARE:

1. 0 TO 1MA, & 0 TO 5MA OUTPUTS
2. A VISUAL LED LOW FUEL WARNING
3. THE ABILITY TO COMPRESS OR EXPAND CERTAIN AREAS OF THE DIAL
4. BLUE/WHITE, RED, OR NVIS LIGHTING
5. RELAY OUTPUT FOR REMOTE DEVICES